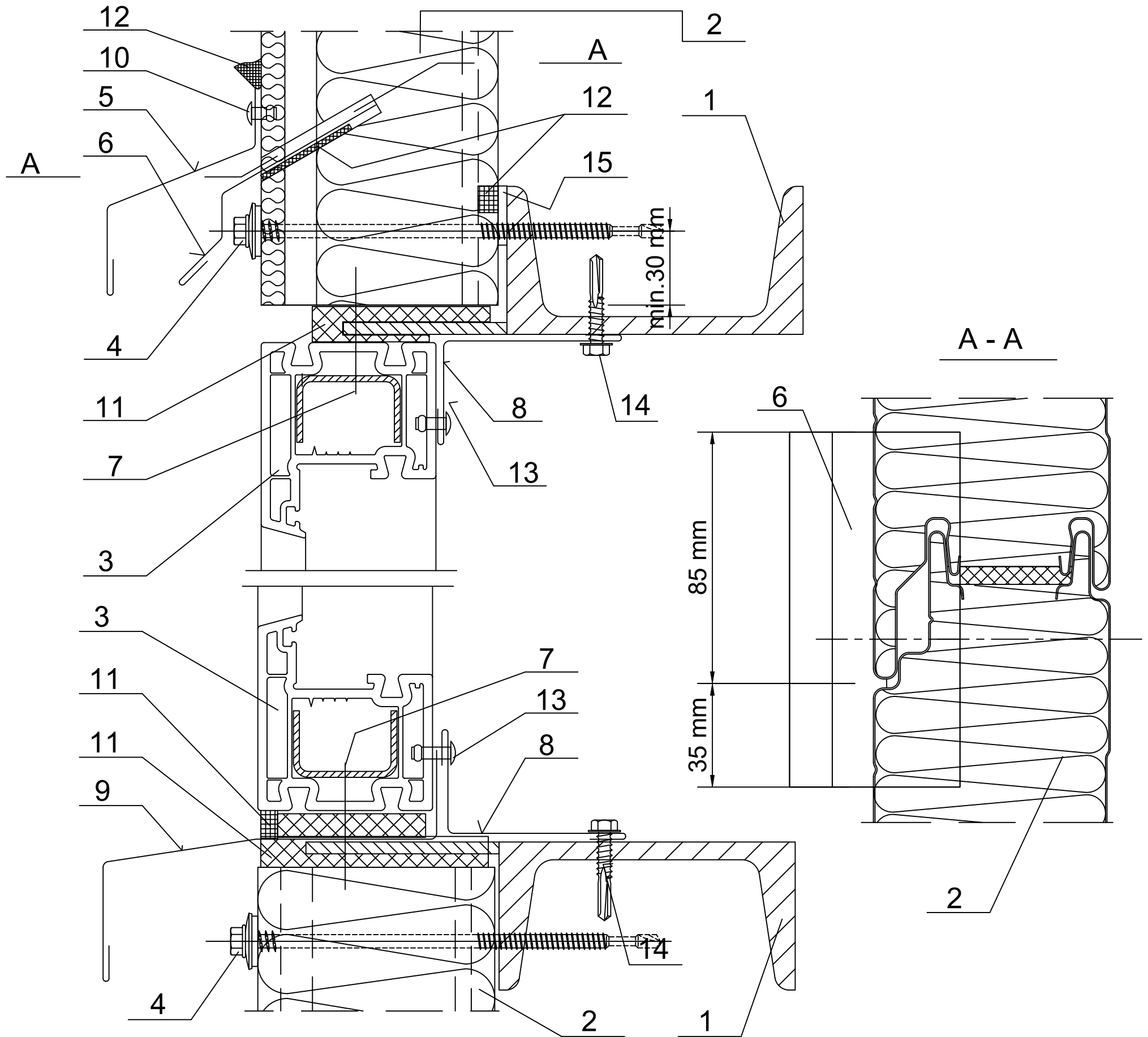


Date	Rev. date	Work nr.	Drw. nr.	Rev.
Drawn by Ruukki	Rev.	M30/S08	-	
Scale 1:3	Building		File nr. P2001/003-00040	



1. Steel elements acc. to engineering design of the structure
2. Ruukki SP2D PIR
3. PCV window
4. Panel fastener for hot-rolled sheeting rail or for cold-bent sheeting rail
5. EA1B07 wall opening flashing
6. EA1B33 drip wall flashing
7. Tap screw for fixing windows (every 500 mm)
8. Custom ordered flashing.

10. Watertight rivet (every 300 mm)
11. Impregnated polyurethane sealant or expanded foam
12. Permanently elastic sealing compound
13. Steel rivet Al/Fe (every 300 mm)
14. Tap screw for metal sheet
15. Permanently elastic sealing compound or EPDM sealant in panel joint